

OIL SEPARATOR ENS 50 LM

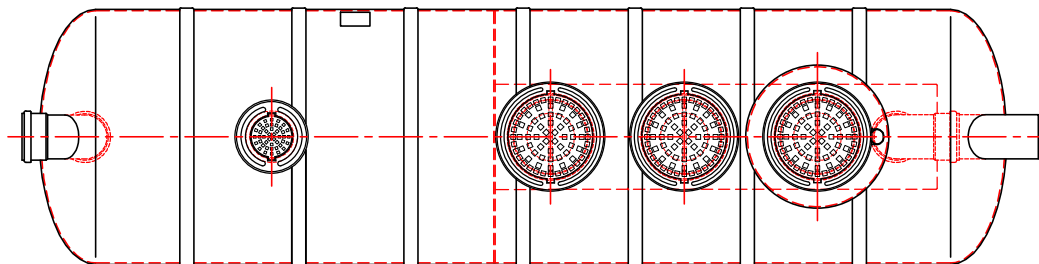
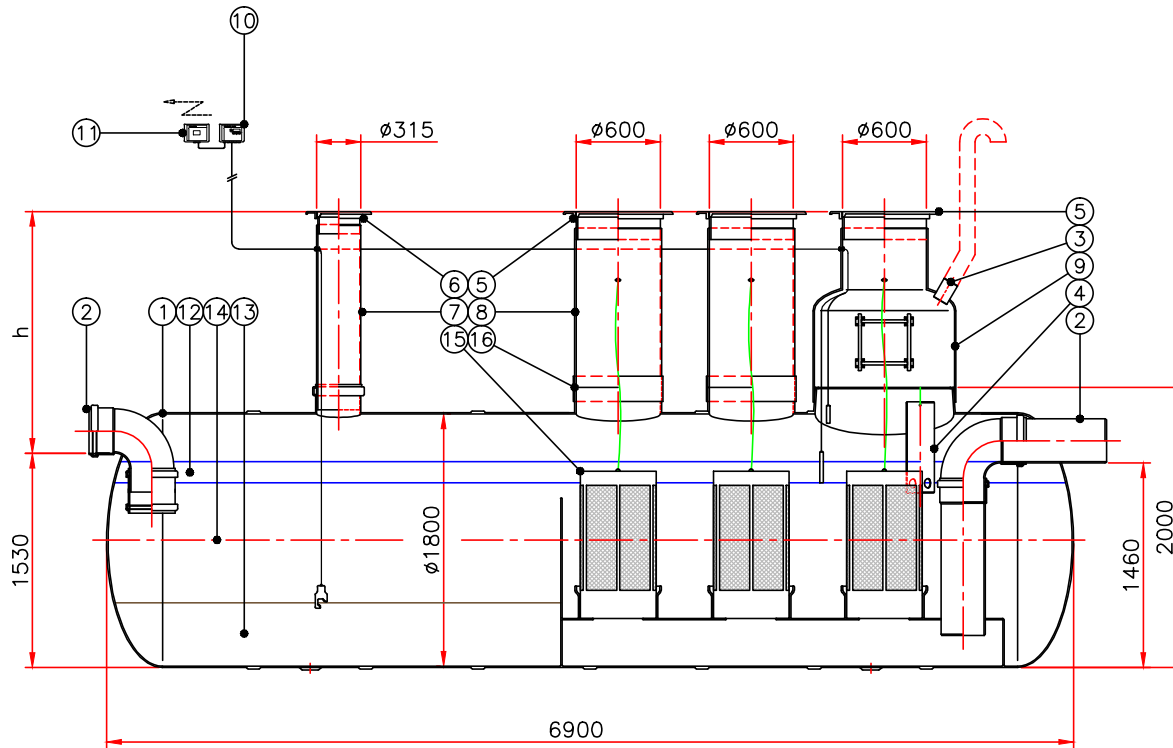
WITH 5 M³ SAND AND SLUDGE TRAP (I-CLASS, NS 50)

Maximum flow rate 50 l/s.

h = height of inlet pipe from ground surface


h = _____ mm

Remarks: _____



1	Separator tank	GRP	Ø1800, L=6900	1
2	Inlet/outlet sewer	PVC	De315	2
3	Ventilation outlet	PVC	De110	1
4	Oil skimming pipe	PVC	De160	1
5	Floating adjustable cover	cast iron	Ø600, 40 t	3
6	Floating adjustable cover	cast iron	Ø315, 40 t	1
7	Emptying pipe for sludge	PVC	De315	1
8	Maintenance shaft	GRP	Ø600	2
9	Maintenance shaft	GRP	Ø800/600	1
	MS 1	(x) <input type="checkbox"/>	h= 900-1300	
	MS 2	<input type="checkbox"/>	h=1300-1700	
	MS 3	<input type="checkbox"/>	h=1700-2100	
	MS 4	<input type="checkbox"/>	h=2100-2500	
10	Alarm unit with -	(x) <input type="checkbox"/>	oil level sensor	1
		<input type="checkbox"/>	damming sensor	
		<input type="checkbox"/>	sludge level sensor	
11	Data transfer unit	(x) <input type="checkbox"/>	SMS-alarm	1
12	Oil storage capacity (height 150 mm)		1500 dm ³	
13	Sand and sludge storage capacity		5000 dm ³	
14	Effective capacity		14100 dm ³	
15	Coalescator 3-D filter			3
16	Installation sleeve for maintenance shafts			4

Title: OIL SEPARATOR ENS 50 LM

Drawing no:	Date:	Scale: 1:55
Design by:	Checked by:	Approved by:
Construction site, customer:	<div>  <div> Fertil OÜ, Ülemiste tee 3 11415 Tallinn, Estonia tel. (+372) 621 5392 faks (+372) 621 1259 www.fertil.ee, info@fertil.ee </div> </div>	